

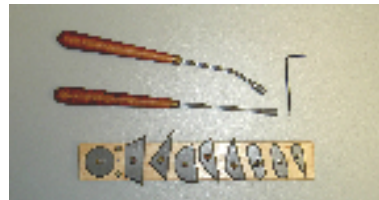
KOCHI INDUSTRIAL CLAY TOOL

TRIANGLE SCRAPER



W070D(right)
W040F(center)
W045E(left)

SPECIAL TOOL w/ 2 HANDLES, 9 REPLACEMENT BLADES



STAINLESS STRAIGHT RAKE with TEETH



Blade Length x Width x Thickness
 BM 100 SS 100mm x 14mm x 2mm
 BM 75SS 75mm x 14mm x 2mm
 BM 50SS 50mm x 14mm x 2mm

300mm RAKE without TEETH



75mm(width)x4mm(thickness)

BLADE ANGLE MOVABLE RAKE



CARBON PLASTIC SPLINE



0.5mm x 30mm x 200mm
 1.0mm x 45mm x 320mm
 1.0mm x 70mm x 320mm
 2.0mm x 70mm x 600mm
 3.0mm x 70mm x 800mm
 4.0mm x 70mm x 800mm
 4.0mm x 90mm x 1600mm

PARTING GAUGE



1mm~5mm Thick 5 pc. Set

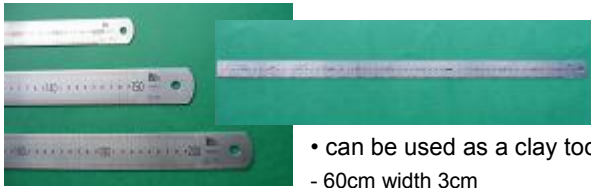
MENTORY PLANE



K350S (Large)
 K300 (Medium)
 K200 (Small)

KOCHI INDUSTRIAL CLAY TOOL (cont)

URUMA STAINLESS SCALE



- can be used as a clay tool
- 60cm width 3cm
- 100cm width 3.5cm
- 150cm width 4cm
- 200cm (Custom order) width 4cm

CURVE TEMPLATE #6



SLITTING FILE (ABRAME) – Extra Fine



4" (100mm)

- Parallel in width with identical contour on top and bottom.
- Light and thinner than knife files and used for filing slots.
- Double cut top and bottom.
- Both edges are single cut.

DRAPAS STAINLESS SCALE



6" (150mm)

WOODEN SPLINE SET (5 pcs)



- Made of wood panel combination, Maple & Beech
- Handmade / Non-curve
- Highly recommended for modelers who works w/ hard clay



60mm(W) x 1300mm(L) x 7mm(T)
46mm(W) x 1100mm(L) x 6mm(T)
45mm(W) x 1000mm(L) x 6mm(T)
40mm(W) x 750mm(L) x 5mm(T)
34mm(W) x 650mm(L) x 4mm(T)